

Labour Market Information

*LMI obtained from the Office for National Statistics and Gov.uk. Last updated January 2020

Greater Lincolnshire LEP

City of Lincoln, North Kesteven, South Kesteven, South Holland, Boston, East Lindsey & West Lindsey

Employment



UK - 76.3%
LEP - 74.3%

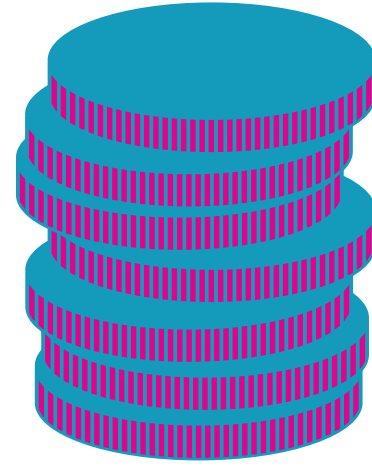
16-64 year old population = 649,300

Unemployment



UK - 3.8%
LEP - 4.2%

Salary



UK Average - £30,414
LEP Average - £27,050

Self-Employment



10.1%

65,600 people in the region
are self-employed

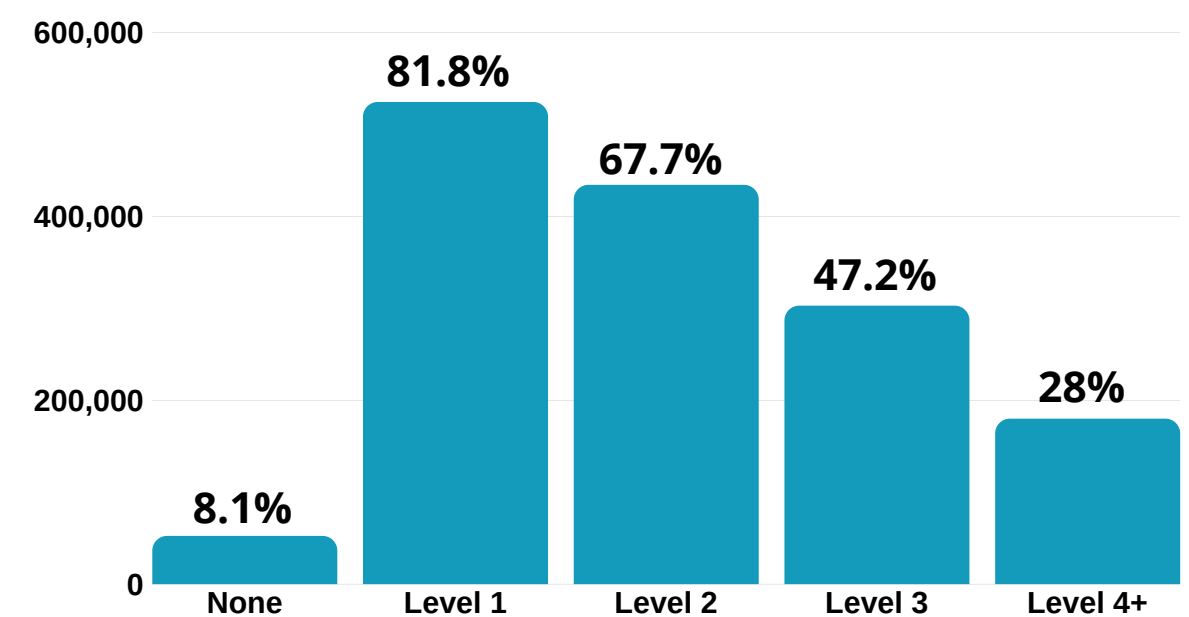
Growth by job sector by 2022

- Management and Directors
- Health and Social Care
- Construction
- Wholesale and Retail
- Care workers



Qualification levels

434,000 people have at least a level 2 qualification such as GCSEs or an NVQ.



Where do people work right now?

Most jobs

- Wholesale & Retail - 71,000 (16.7%)
- Manufacturing - 66,000 (15.5%)
- Health & Social Care - 61,000 (14.4%)
- Administration - 38,000 (8.9%)
- Education - 37,000 (8.7%)

Fewest jobs

- Information Technology - 7,000 (1.6%)
- Real Estate - 5,000 (1.2%)
- Water, Sewerage & Waste - 5,000 (1.2%)
- Electricity, Gas & Air - 1,250 (0.3%)
- Mining, Quarrying & Utilities - 500 (0.1%)

Did you know...

The NHS is the UK's biggest employer, and the 5th biggest employer in the world!

What are the region's biggest companies to work for?

